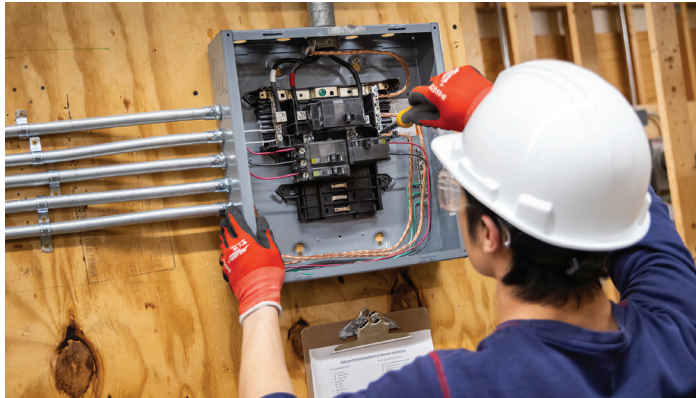


# Electricity

PROGRAM CODE: 31-413-1



Technical Diploma



COURSE	CREDITS
ELECTY-308 Basic Skills for Electrical Wiring ‡	2
ELECTY-310 Cable Wiring ‡	2
ELECTY-312 Electrical Raceway Installation ‡	2
ELECTY-340 Electrical Code Fundamentals 1 ‡	2
ELECTY-378 Construction Blueprint Reading ‡	1
ELECTY-392 Principles of Electricity (or) ELECTY-390 Principles of Electricity 1 and ELECTY-391 Principles of Electricity 2	5
ELECTY-314 Electrical Service Installation ‡	1
ELECTY-328 Electric Motor Control Wiring ‡	2
ELECTY-341 Electrical Code Fundamentals 2 ‡	1
ELECTY-382 Electrical Equipment Circuit Analysis ‡	1
ELECTY-384 Electrical Design and Estimating ‡	1
ELECTY-386 Solid State Devices ‡	2
ELECTY-394 Electrical Apparatus ‡	4
ENG-340 Workplace Communication (or) ENG-195 Written Communication ‡	2

**Location:** Downtown Milwaukee Campus  
**Start Dates:** August and January  
**Admission Requirement:** High school diploma or GED, ability to drive and a valid driver's license  
**Financial Aid Eligible:** Yes.  
 Apply at [fafsa.gov](http://fafsa.gov). Use School Code 003866.

### Program Description

Learn skills needed for entry-level electrician positions in industry and the building trades. This program does not substitute for an electrical apprenticeship, but it does offer the basic knowledge needed to begin working for some electrical contractors.

### Career Outlook

Some graduates use the training as a step toward an electrician apprenticeship.

### Program Learning Outcomes

- Apply electrical theory.
- Install electrical equipment in a residential setting.
- Install electrical equipment in a commercial setting.
- Analyze industrial equipment.

**CREDITS**  
 Total credits needed to complete this diploma **28**

‡ Prerequisite required.  
 Program curriculum requirements are subject to change.  
**Current MATC students should consult their Academic Program Plan for specific curriculum requirements.**



**Complete Program Details**

**QUESTIONS?** 414-297-8901 or [mctpathway@matc.edu](mailto:mctpathway@matc.edu)