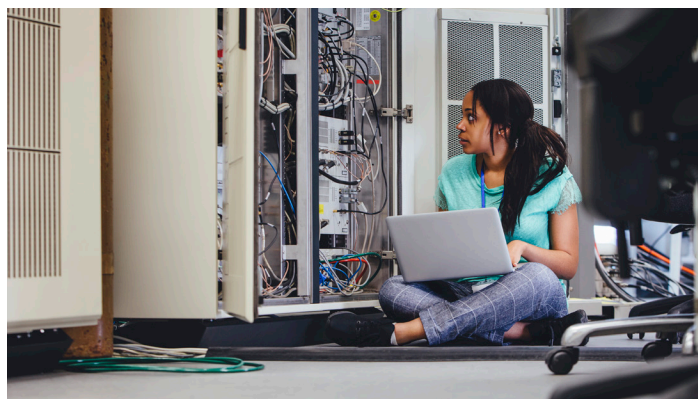


Computer Electronics Technology

PROGRAM CODE: 10-605-3



Associate Degree

**Location:** Downtown Milwaukee Campus**Start Dates:** August and January**Admission Requirement:** High school diploma or equivalent**Academic Preparedness Requirement:** One year of high school-level algebra**Financial Aid Eligible:** Yes. Use code 003866 at fafsa.gov.

Program Description

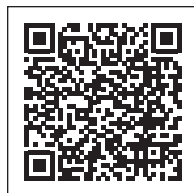
Learn to develop, install, maintain, troubleshoot and repair computers and processors in manufacturing and control systems. Work with edge computers, smart sensors, and networking hardware and software. This program is manufacturing- and hardware-focused compared to IT-related programs.

Career Outlook

Outlook is strong for computer electronics technicians with skills to perform installation, configuration, upgrading and maintenance of computer and network systems, and who can develop technical software.

Program Learning Outcomes

- Apply electronic theory to practice.
- Operate test equipment.
- Build electronic circuits and systems.
- Evaluate the operation of electronic circuits or systems.
- Communicate technical information.

**Complete Program Details****QUESTIONS?** 414-297-6319 or stempathway@matc.edu

COURSES	CREDITS
QETECH-200 Fundamentals of Engineering	3
ELCTEC-110 DC/AC Electronics 1 ‡ ^	4
ELCTEC-130 Digital Electronics ‡ ^	3
ENG-195 Written Communication ‡	3
(or) ENG-201 English 1 ‡	
MATH-115 College Technical Mathematics 1 ‡ ^	5
(or) Any 200-level MATH course	
ELCTEC-111 DC/AC Electronics 2 ‡ ^	3
ELCTEC-120 Electronic Devices ‡ ^	4
ELCTEC-140 Microprocessors ‡ ^	3
ELCTEC-186 Fabrication Techniques ‡	1
ENG-197 Technical Reporting ‡	3
(or) Any 200-level ENG or SPEECH course	
MATH-116 College Technical Mathematics 2 ‡	4
ELCTEC-150 Data Communications and Networking ‡	3
ELCTEC-173 Computing With C ‡	3
ELCTEC-174 Hardware Systems ‡	3
ELCTEC-178 Software Systems ‡	3
ELCTEC-172 Input/Output Programming ‡	3
ELCTEC-176 Computer Networks ‡	3
ELCTEC-179 Advanced Computer Systems ‡	3
ELECTIVE (One credit)	1
PSYCH-199 Psychology of Human Relations	3
(or) PSYCH-231 Introductory Psychology	
SOCSCI-197 Contemporary American Society	3
(or) SOCSCI-203 Introduction to Sociology	

CREDITS

Total credits needed to complete this degree

64

‡ Prerequisite required.

^ Counts toward earning the Electronics Technician Fundamentals technical diploma.

Program curriculum requirements are subject to change.

Current MATC students should consult their Academic Program Plan for specific curriculum requirements.

MATC courses are offered in person, entirely online or partially online.

Check each course's delivery options in Self-Service at selfservice.matc.edu.Official Wisconsin Technical College System program title:
Electronics – Computer.